

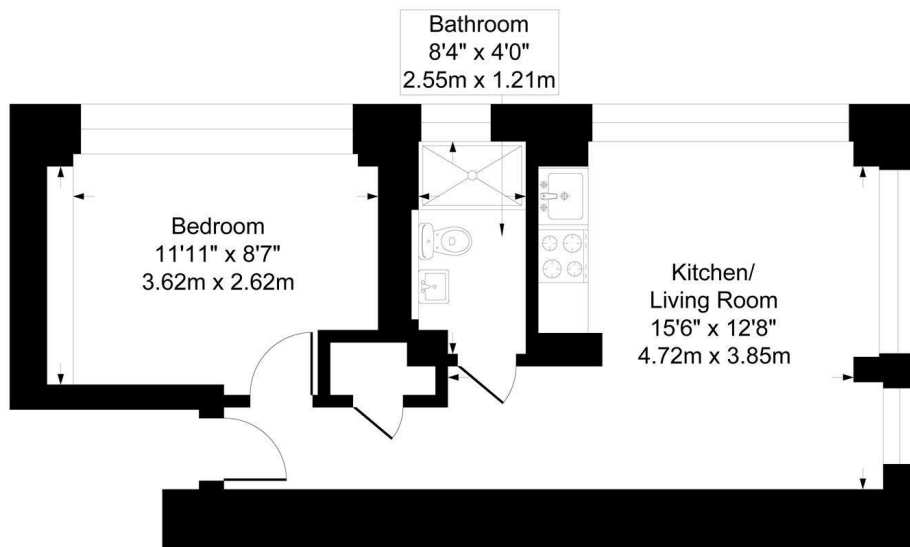
**Shaw
& Co**
ESTATE
AGENTS

£225,000

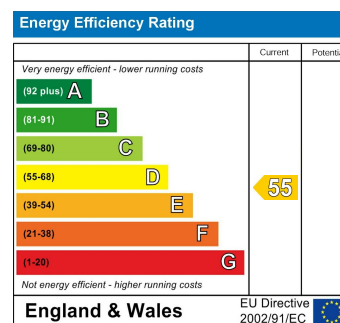
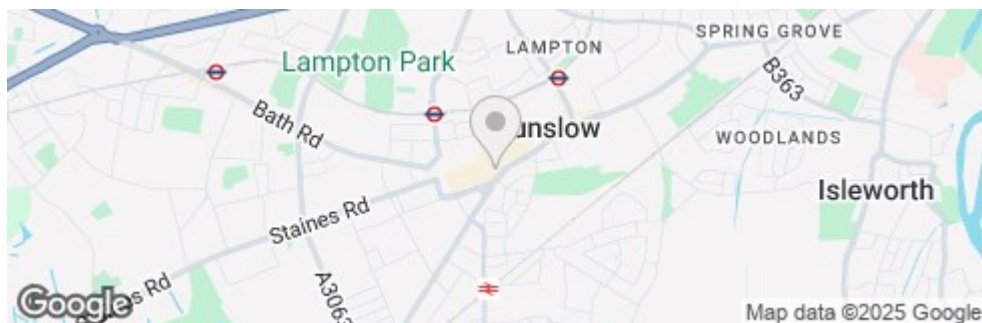
Douglas Road

Hounslow, TW3 1DA

Approximate Gross Internal Area
384 sq ft - 36 sq m



Although every attempt has been made to ensure accuracy, all measurements are approximate.
 This floorplan is for illustrative purposes only and not to scale.
 Measured in accordance with RICS Standards.



- 1 Bedroom Flat
- Long Lease
- Great Transport Links
- Parking
- Fantastic Condition
- Ideal First Time Buy or Investment

Agents Note: These particulars are for guidance only. All measurements area approximate and should be rechecked by buyers / tenants. While care has been taken to ensure accuracy, they should be solely relied upon.

**Shaw
 & Co**
 ESTATE
 AGENTS

OFFICE ADDRESS
 Whitton
 Twickenham
 TW2 7LT

OFFICE DETAILS
 0208 894 3646
whitton@shawandcoestates.com